



MONTHLY MEMBERSHIP PROGRESS REPORT

District 3231A2

Results as of: 06/30/2019

GMT: JAYESH THAKKAR

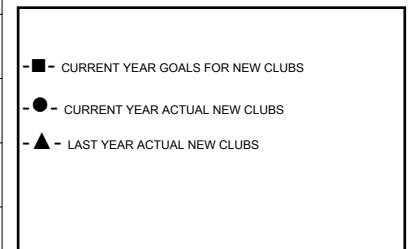
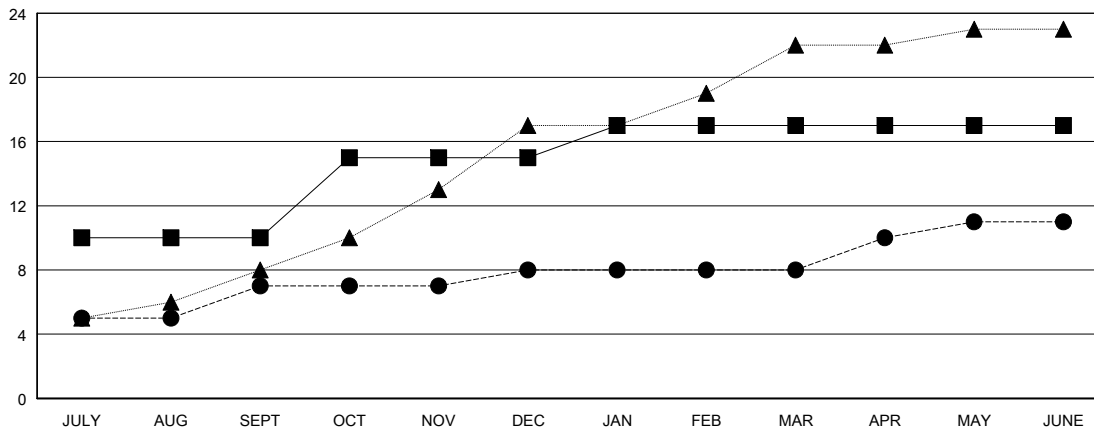
LOCATION INDIA

GMT CA

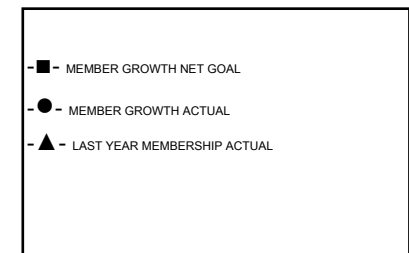
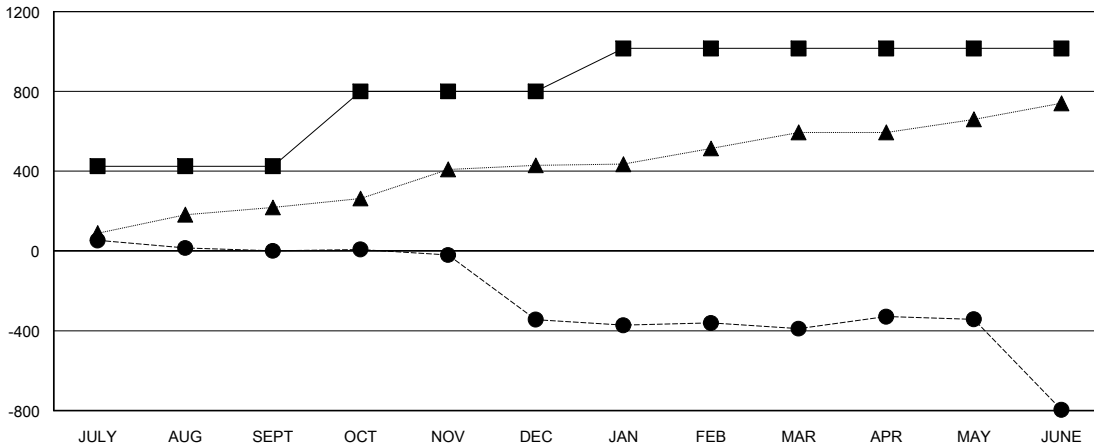
Clubs			
RESULTS FOR 2018-2019			
QUARTER	NEW CLUB GOAL	NEW CLUBS	DROPPED CLUBS
JULY/AUG/SEPT	10	7	2
OCT/NOV/DEC	5	1	11
JAN/FEB/MAR	2	0	2
APR/MAY/JUNE	0	3	7

Members			
RESULTS FOR 2018-2019			
QUARTER	MEMBER GROWTH NET GOAL	MEMBER GROWTH ACTUAL	DROPPED MEMBERS ACTUAL (including transfers)
JULY/AUG/SEPT	425	272	258
OCT/NOV/DEC	375	172	490
JAN/FEB/MAR	215	94	108
APR/MAY/JUNE	0	217	581

GOALS AND ACTUAL NEW CLUBS CUMULATIVE



GOALS AND ACTUAL MEMBERS CUMULATIVE



DROPPED CLUBS: 22

79 CLUBS OF 120 ADDED 1 OR MORE NEW MEMBERS

GENDER DISTRIBUTION	
MALE	2,334 (63.74%)
FEMALE	1,328 (36.26%)
Women Percentage Fiscal Year Goal: 75%	

DROPPED MEMBERS	
DECEASED	16
CLUB CANCELLED	367
OTHER	1,054
TOTAL	1,437

[CLICK HERE FOR CUMULATIVE MEMBERSHIP DATA](#)

TOTAL FAMILY UNIT MEMBERS	1,715
FAMILY MEMBERS PAYING HALF DUES	900